



NODER QR-W

QR CODE READER

Technical Documentation

TABLE OF CONTENTS

TABLE OF CONTENTS.....	2
1. Protection.....	3
2. Warning.....	3
3. Device description.....	3
4. Dimensions of the device.....	4
5. Connection of QR reader.....	5
5.1 Example of connection QR-W reader to EWE4 controller.....	5
5.2 QR-USB reader connection diagram.....	6
6. QR reader configuration.....	7
6.1 Configuration for WIEGAND port.....	7
6.2 Configuration for USB port.....	10

1. Protection

Read this instructions before installing this product. The manufacturer is not responsible for any malfunction or damage to the equipment resulting from failure to follow the instructions. Damage resulting from incorrect installation, maintenance or incorrect operation is not covered by the warranty. Making any modifications to the device that are not authorized by the manufacturer or performing independent repairs results in the loss of rights resulting from the warranty.

2. Warning

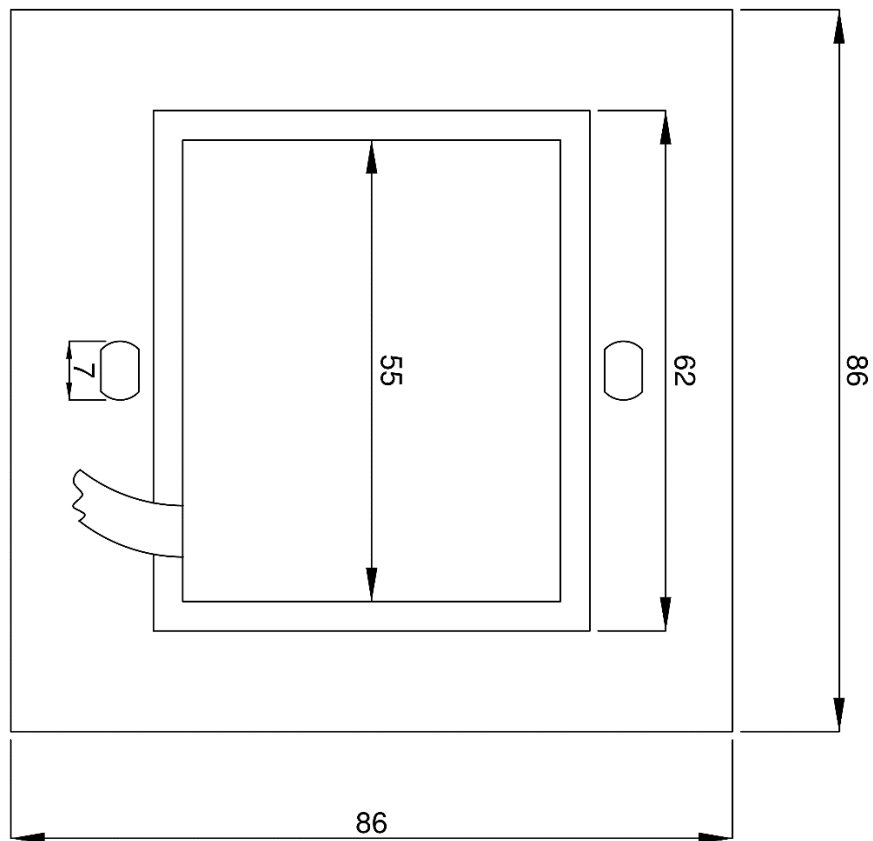
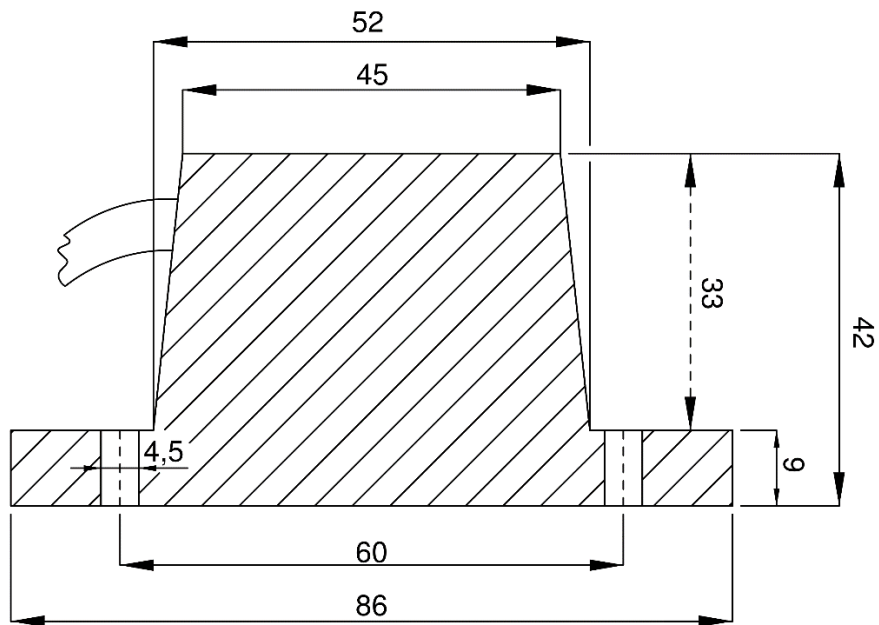
Electric device under voltage. Before performing any activities related to the power supply (connecting wires, installing the device, etc.), make sure that **this device is not connected to the power supply**. Installation should be carried out by a person with appropriate electrical qualification.

3. Device description

QR-W readers are devices that communicate with the controller using the Wiegand protocol. The Wiegand protocol allows installation up to 50 m from the controller. The readers are designed for both, indoor and outdoor operation.

QR-W readers can read barcodes at a distance of up to 20cm from the reader (depends on the size of the barcode). The reader will signal a correctly read barcode with a single beep and an illuminated LED.

4. Dimensions of the device



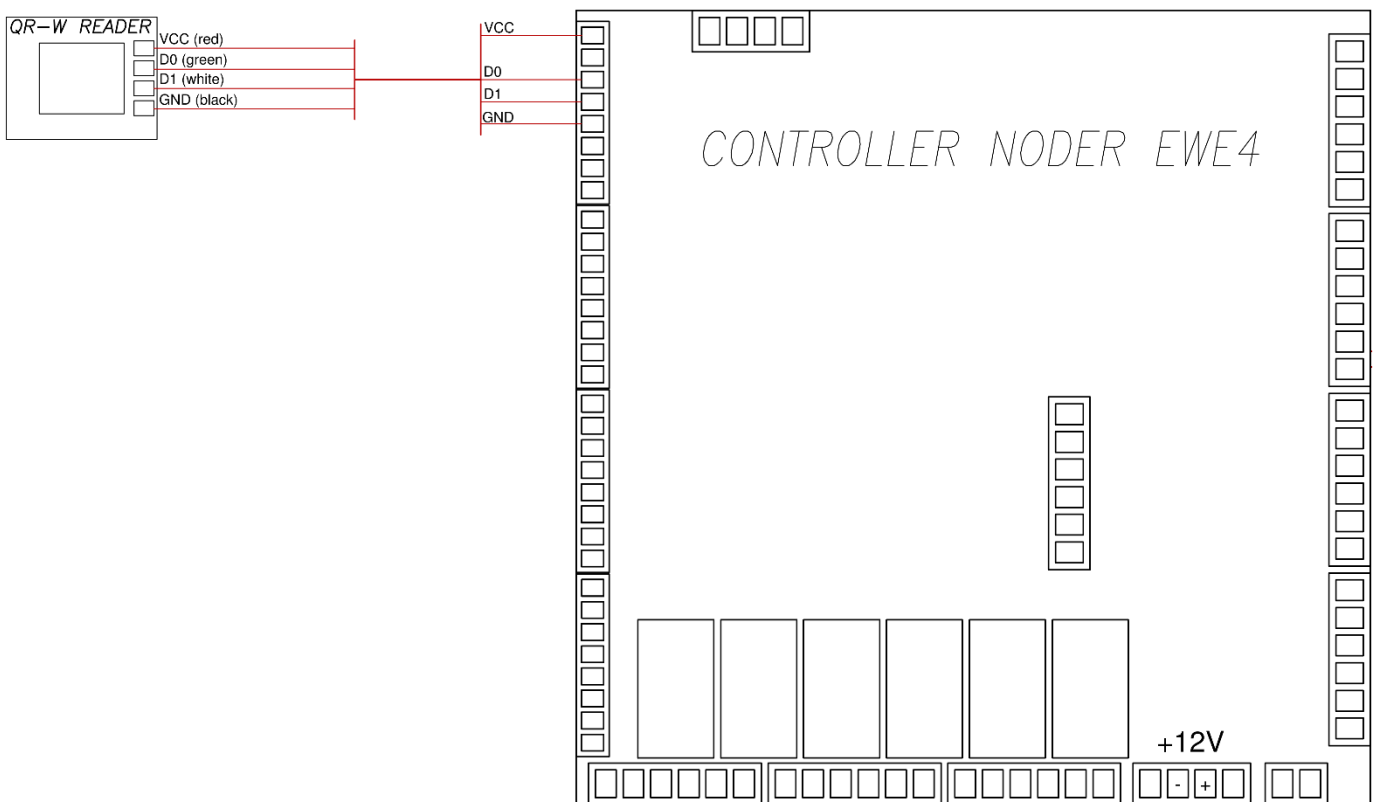
5. Connection of QR reader

QR-W readers are equipped with a four-wire connection cable. They can be connected to EWE4 controllers. Wire colors:

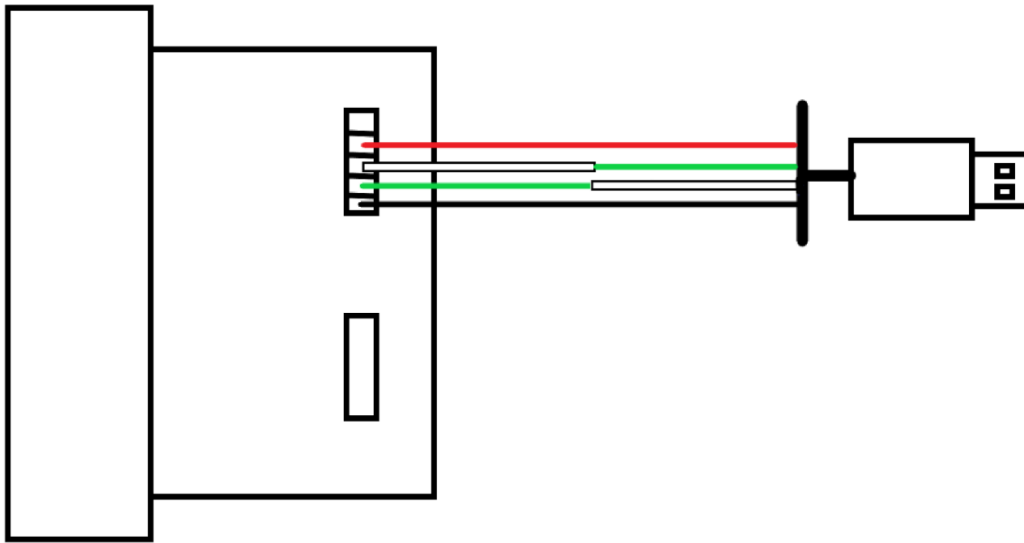
- Black - GND
- Green - Wiegand D0
- White - Wiegand D1
- Red - VCC

QR-W readers are equipped with 2 communication with the device. The USB port allows the device to be connected directly to a computer. The RS232 (Wiegand) port allows communication between the device and the controller. The RS232 port must be used to connect the readers to the EWE4 controller using the Wiegand interface.

5.1 Example of connection QR-W reader to EWE4 controller



5.2 QR-USB reader connection diagram



6. QR reader configuration

6.1 Configuration for WIEGAND port

Using a QR reader, scan the barcode in the following order to set the given data output format. **Read the barcodes one by one to avoid scanning two codes at the same time!**

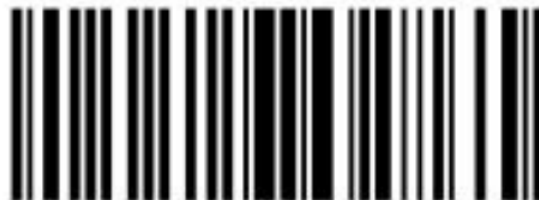
1. Restore the reader to factory settings:



1. Set Baud rate 9600:



2. Set Wiegand signal output:



3. Set Wiegand 34-bits signal output:

NODER S.A., 5h Olszańska Street, 31-513 Cracow, noder@noder.pl



4. Example of 34-bits QR codes:



WG34

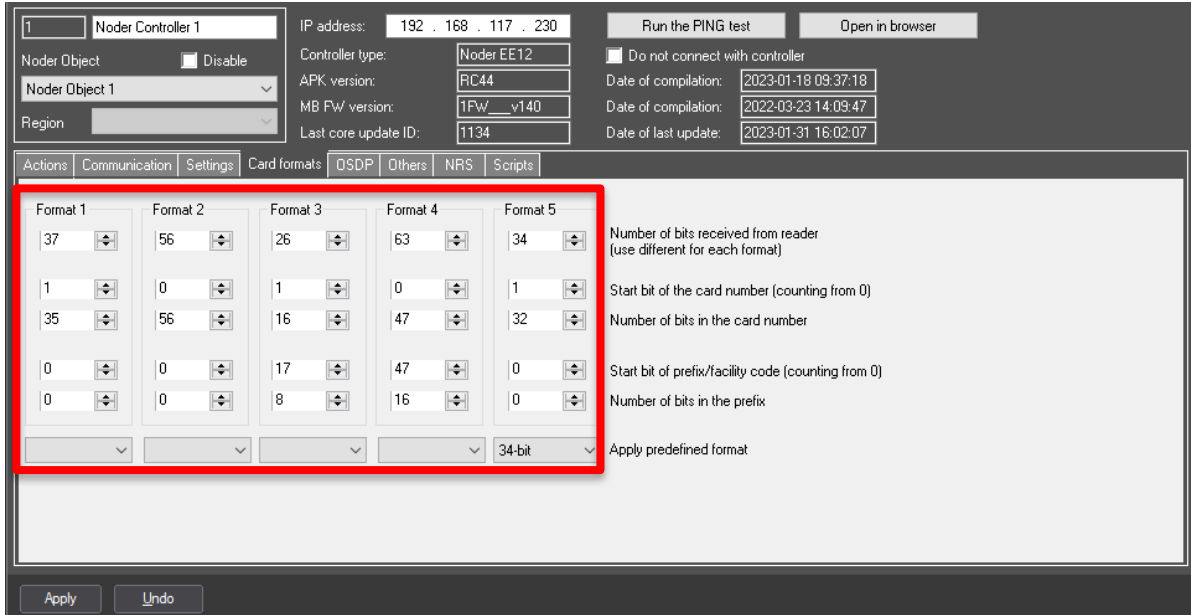
4294967294



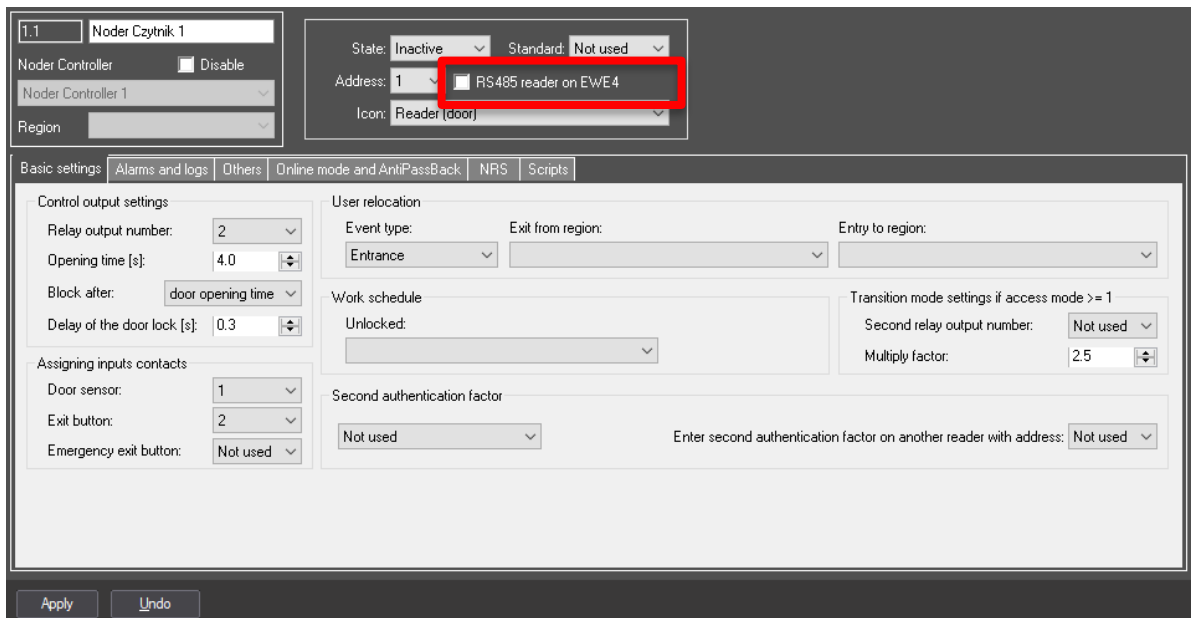
WG34

209984503

It is recommended to test the configured QR reader. To do this, connect it to the controller for testing. In order for the reader to read the card correctly, the 34-bit format must be set in the controller software (in one of the available positions).



And the option "RS485 reader on EWE4" should be unchecked.



If the QR reader has been configured correctly the numbers of the codes read should be the same.

6.2 Configuration for USB port

Using a QR reader, scan the barcode in the following order to set the given data output format. **Read the barcodes one by one to avoid scanning two codes at the same time!**

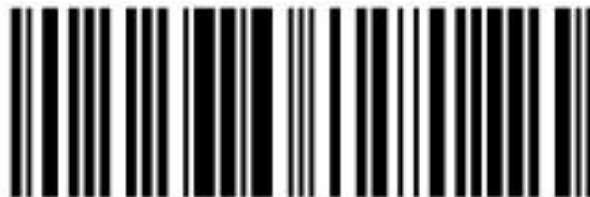
1. Restore the reader to factory settings:



2. Set USB signal output:



3. Set the raw data output:



4. Add return key change line output:



5. The configured QR reader is recommended to test to verify the correct configuration. To do this, scan the QR codes placed below. If the numbers of the read codes are identical, this indicates a correctly configured reader:



1



1234567890



9999999999999999